

a friendlier front yard

Front gardens are a way of putting your best foot forward. They show off your house to a favorable advantage, helping to cover its flaws and accentuate its good points. But most of all, front gardens invite friends and neighbors to slow down, or even stop to enjoy the view. This one even has a grass path to invite people from the sidewalk into the garden. And a brick path leads visitors to the porch and front door.

There's a lot going on in this garden, but it's unified by color. It starts out yellow in spring with lots of daffodils and other spring bulbs. Annuals and perennials in burgundy, purple and pink keep it colorful late spring through fall. And finally, evergreens, including a collection of dwarf conifers you select yourself, as well as shrubs and small trees for structure keep the view interesting in the winter. This garden will keep your best foot forward 12 months of the year. □

— Jim Childs

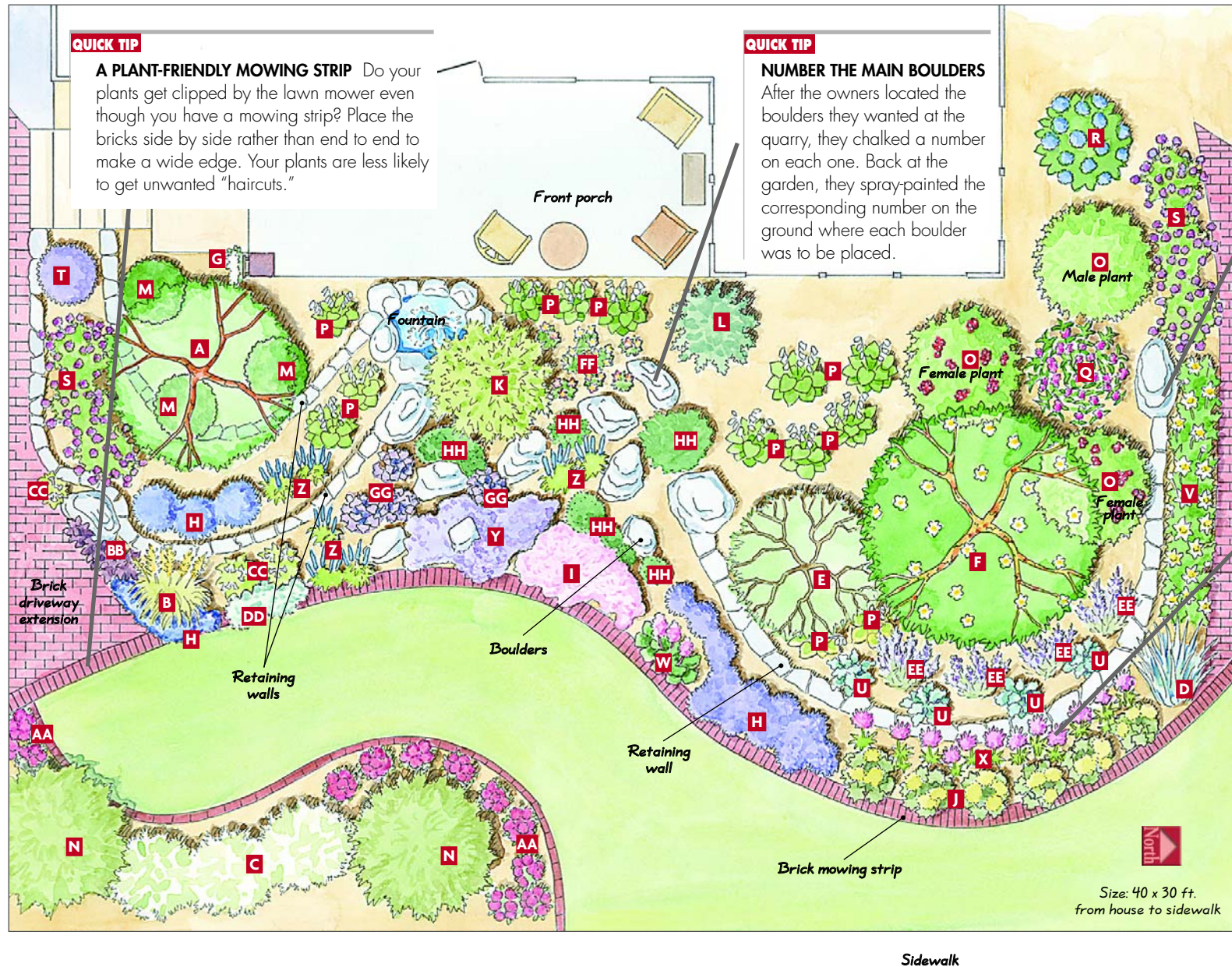
GardenGate®

2200 Grand Ave., Des Moines, Iowa 50312
1-800-978-9631
www.GardenGateMagazine.com

| Code | Plant Name | No. to Plant | Bloom Color | Season of Interest | Cold/Heat Zones | Height/Width |
|------|--|--------------|----------------------------|--------------------|-----------------|------------------|
| A | Paperbark maple <i>Acer griseum</i> | 1 | | Fall | 4-8/8-1 | 15 ft./8 ft. |
| B | Moor grass <i>Molinia caerulea arundinacea</i> 'Skracer' | 1 | Purple | Fall | 5-9/9-1 | 7 ft./3 ft. |
| C | Maiden grass <i>Miscanthus sinensis</i> 'Yaku-jima' | 3 | Gray with maroon | Fall | 5-9/9-1 | 4 ft./4 ft. |
| D | Switch grass <i>Panicum virgatum</i> 'Heavy Metal' | 1 | Purple-green | Fall | 5-9/9-1 | 3 ft./30 in. |
| E | Laceleaf maple <i>Acer palmatum dissectum</i> | 1 | | Summer | 5-8/8-1 | 8 ft./8 ft. |
| F | Japanese stewartia <i>Stewartia pseudocamellia</i> | 1 | White | Summer | 5-8/8-1 | 20 ft./10 ft. |
| G | Montana clematis <i>Clematis montana</i> | 1 | Pink | Summer | 6-9/9-1 | 15 ft./4 ft. |
| H | Catmint <i>Nepeta</i> hybrid | 15 | Lavender-blue | Summer | 5-9/9-1 | 18 in./18 in. |
| I | Dianthus <i>Dianthus</i> 'Bath's Pink' | 7 | Pink | Summer | 4-9/9-1 | 10 in./12 in. |
| J | Lady's mantle <i>Alchemilla mollis</i> | 6 | Chartreuse | Summer | 4-7/7-1 | 15 in./20 in. |
| K | Fountain bamboo <i>Fargesia nitida</i> | 1 | | Evergreen | 7-10/10-1 | 12 ft./4 ft. |
| L | Hinoki cypress <i>Chamaecyparis obtusa</i> 'Wells Special' | 1 | | Evergreen | 5-8/8-1 | 15 ft./6 ft. |
| M | Yew <i>Taxus xmedia</i> 'Everlow' | 3 | | Evergreen | 5-7/7-1 | 18 in./4 ft. |
| N | Juniper <i>Juniperus chinensis</i> 'Sea Green' | 2 | | Evergreen | 3-9/9-1 | 6 ft./4 ft. |
| O | Holly <i>Ilex xmeserveae</i> | 3 | White | Evergreen | 5-9/9-1 | 5 ft./6 ft. |
| P | Hosta <i>Hosta</i> 'Royal Standard' | 13 | White | Summer | 3-8/8-1 | 2 ft./3 ft. |
| Q | Beautyberry <i>Callicarpa bodinieri</i> | 1 | Lilac | Fall | 5-8/8-1 | 4 ft./4 ft. |
| R | Hydrangea <i>Hydrangea macrophylla</i> 'All Summer Beauty' | 1 | Blue/pink | Summer | 6-9/9-1 | 4 ft./4 ft. |
| S | Verbena <i>Verbena canadensis</i> 'Homestead Purple' | 6 | Purple | Summer | 4-7/7-1 | 18 in./18 in. |
| T | Lavender <i>Lavandula angustifolia</i> | 1 | Lavender | Summer | 5-8/8-1 | 2 ft./2 ft. |
| U | Cabbage <i>Brassica</i> spp. | 4 | | Summer | Annual/12-1 | 12 in./15 in. |
| V | Anemone <i>Anemone xhybrida</i> 'Honorine Jobert' | 8 | White | Fall | 4-8/8-1 | 4 ft./2 ft. |
| W | Bergenia <i>Bergenia</i> hybrid | 2 | Pink | Spring | 4-8/8-1 | 12 in./18 in. |
| X | Spider flower <i>Cleome hassleriana</i> | 12 | Pink | Summer | Annual/12-1 | 3 to 5 ft./1 ft. |
| Y | Creeping phlox <i>Phlox subulata</i> | 3 | Pink | Spring | 3-8/8-1 | 4 in./20 in. |
| Z | Salvia <i>Salvia farinacea</i> 'Victoria' | 7 | Blue | Summer | Annual/12-1 | 2 ft./1 ft. |
| AA | Sedum <i>Sedum</i> 'Herbstfreude' ('Autumn Joy') | 12 | Pink to rust | Fall | 3-10/10-1 | 2 ft./2 ft. |
| BB | Perilla <i>Perilla frutescens</i> 'Atropurpurea' | 3 | Purple | Summer | Annual/12-1 | 2 ft./1 ft. |
| CC | Flowering tobacco <i>Nicotiana glauca</i> | 3 | White | Summer | Annual/12-1 | 5 ft./2 ft. |
| DD | Silvermound <i>Artemisia schmidtiana</i> | 3 | | Summer | 5-8/8-1 | 12 in./18 in. |
| EE | Russian sage <i>Perovskia atriplicifolia</i> | 4 | Lavender-blue | Summer | 5-9/9-1 | 3 ft./3 ft. |
| FF | Hellebore <i>Helleborus orientalis</i> | 8 | Shades of purple and white | Spring | 4-9/9-1 | 18 in./18 in. |
| GG | Coral bells <i>Heuchera micrantha</i> 'Palace Purple' | 4 | Blush white | Summer | 4-8/8-1 | 2 ft./18 in. |
| HH | Dwarf conifers* | 6 | | Evergreen | | |

* Owner's choice of plants to personalize your garden

front yard plan



QUICK TIP

PLACING THE BOULDERS

When you have huge boulders to place, hire a delivery truck with a mechanical lift. It costs a bit more than having them dumped on the site and moved with a skid loader, but you can be exact with the boulder placement.

QUICK TIP

RESEEDING ANNUALS

Allow a few annuals, such as flowering tobacco, perilla, 'Victoria' salvia and these spider flowers, to reseed through the garden to keep it looking full. They also give the garden a subtly different and fresh look each year.